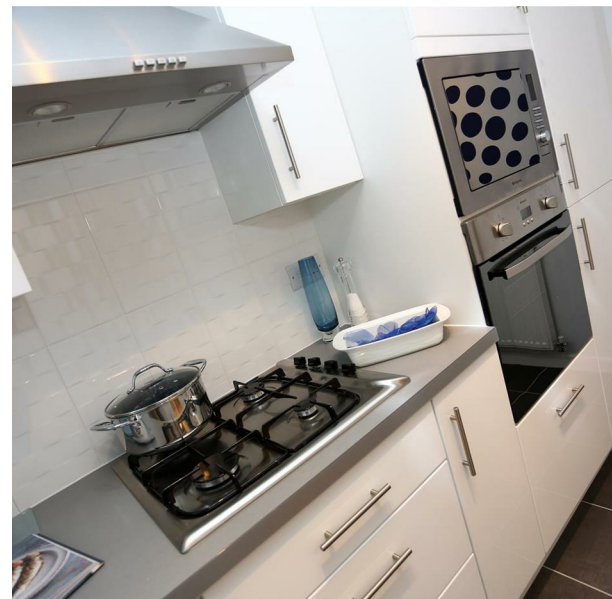


Plot 217, West Park Garden Village, Edward Pease Way, Darlington,
DL2 2TS.
£149,995



Plot 217, West Park Garden Village, Edward Pease Way, Darlington, DL2 2TS.

£149,995

Council Tax Band:

* First time buyer deals available £5,000 towards deposit and flooring *

The Ely is a superb Two bedroom home with parking that's ideal for first-time buyers and new families alike. Downstairs, a rear lounge leads out onto an attractive garden via French doors, and a separate kitchen/dining area creates a welcoming and airy atmosphere. There is also a downstairs cloakroom and storage.

The principal bedroom with fitted wardrobes greets you upstairs, as well as a second spacious bedroom and an immaculate family bathroom. The Ely features the very latest fixtures and fittings, creating a modern and sustainable environment for your household.

EPC RATING: B

These houses are sold on a FREEHOLD basis.

There is an estate management charge of approx.

£110+VAT pa (23/24)

Principal elevation

Hallway

Ground floor W/C

Kitchen/dining area

11'5" x 6'9" (3.50 x 2.06)

Lounge

13'3" x 10'2" (4.05 x 3.11)

First floor landing

Principal bedroom

13'3" x 10'3" (4.05 x 3.14)

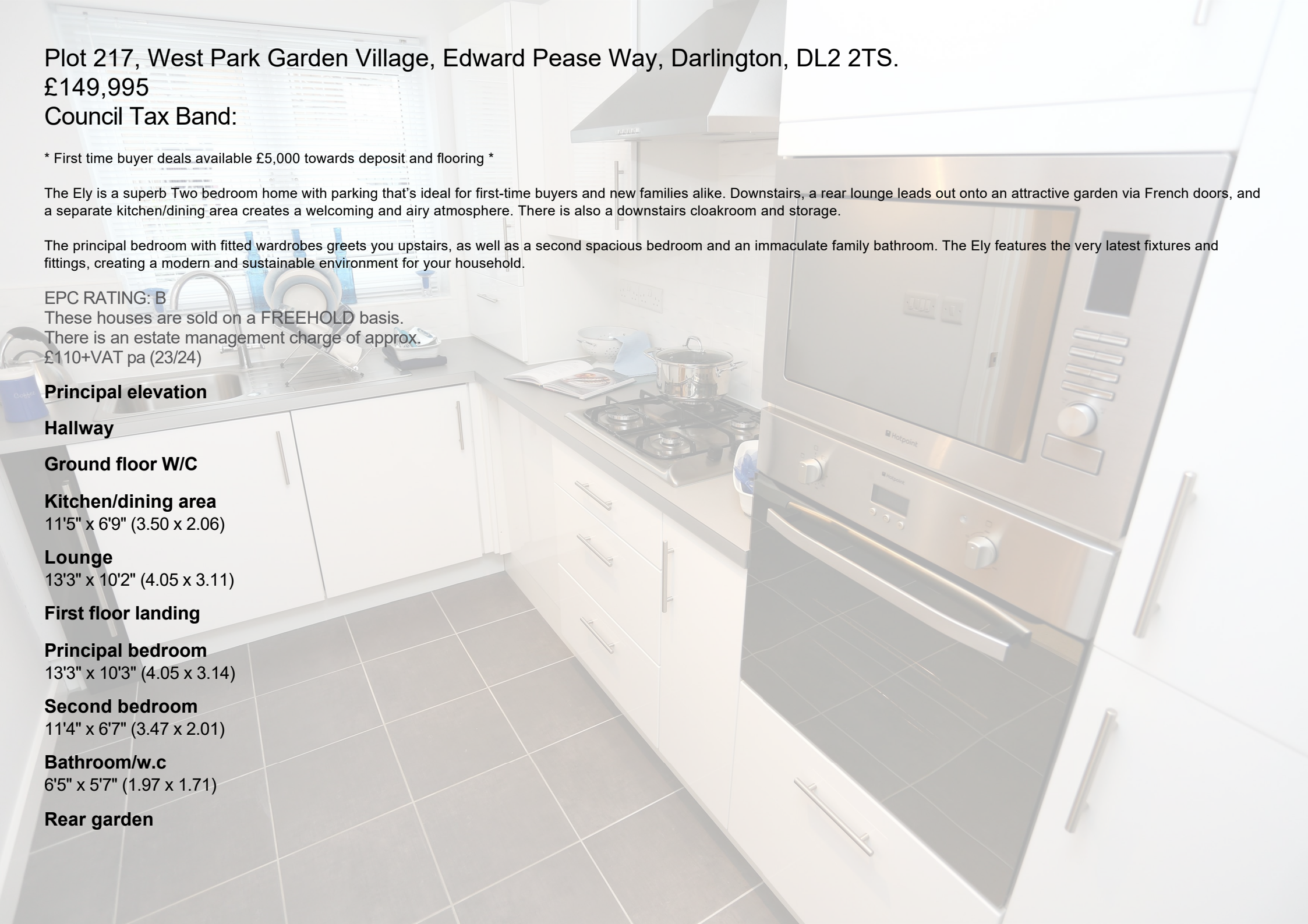
Second bedroom

11'4" x 6'7" (3.47 x 2.01)

Bathroom/w.c

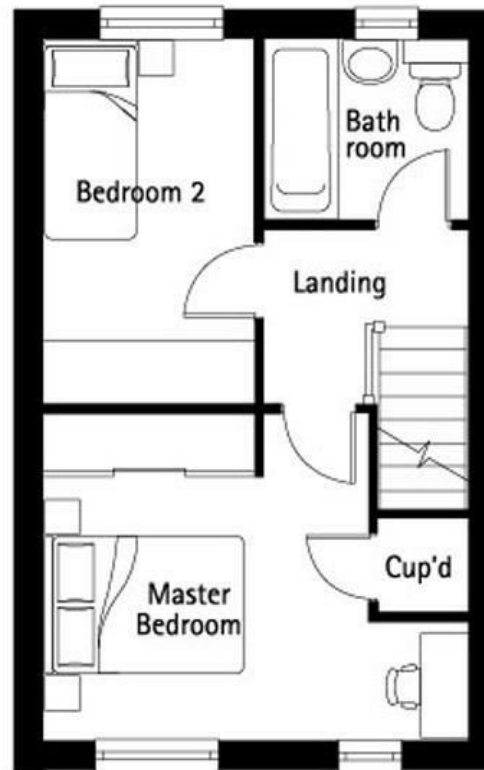
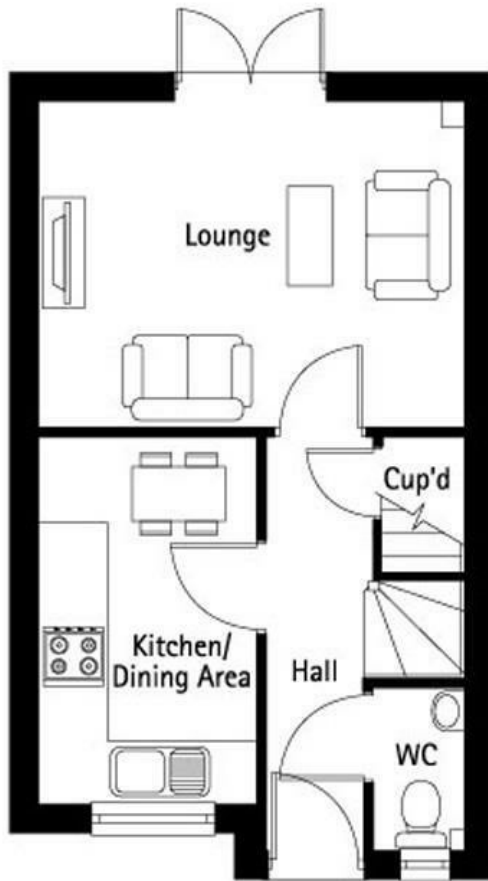
6'5" x 5'7" (1.97 x 1.71)

Rear garden





Business Central 2 Union Square
 Central Park
 Darlington
 County Durham
 DL1 1GL
 01325 804850
sales@estatesgroup.co.uk
<https://estates-theartofproperty.co.uk/>



Energy Efficiency Rating		Current	Potential
<i>Very energy efficient - lower running costs</i>			
(92 plus) A			
(81-91) B			
(69-80) C			
(55-68) D			
(39-54) E			
(21-38) F			
(1-20) G			
<i>Not energy efficient - higher running costs</i>			
England & Wales		EU Directive 2002/91/EC	